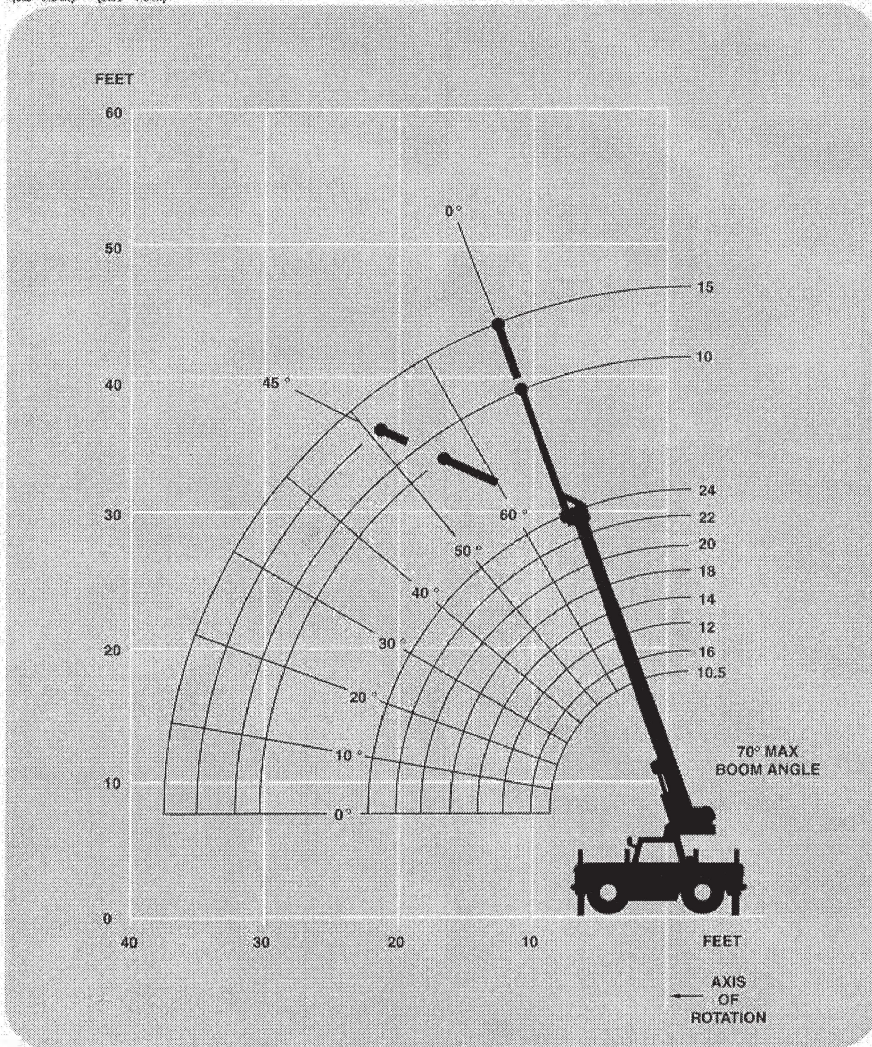
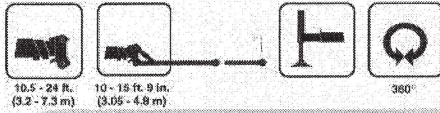


FORD CRANE INC.

Working Range

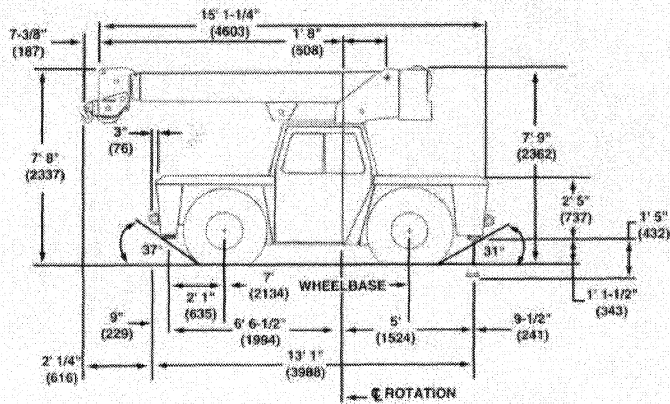
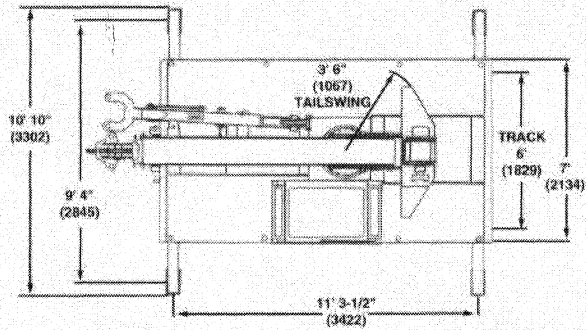


4'-10"

4'-10"

DIMENSIONS ARE FOR LARGEST GROVE FURNISHED HOOK BLOCK AND HEADACHE BALL, WITH ANTI-TWO BLOCK ACTIVATED.

Dimensions



Turning Radius 15' 3" (4658 mm)
 Front Axle Load 6,731 lbs. (3053 kg)
 Rear Axle Load 8,730 lbs. (3960 kg)
 Gross Vehicle Weight 15,461 lbs. (7013 kg)



85% Domestic (Pounds)

(Feet)	Over Front	360°
5	17,000	17,000
6	15,000	15,000
8	13,000	13,000
10	11,000	11,000
12	9,500	9,500
14	8,100	7,180
16	6,900	5,740
18	5,900	4,750
20	5,150	4,040
22	4,590	3,500

A6-829-007960A



75% Domestic (Pounds)

(Feet)	Stationary Capacity Defined Arc Over Front	Stationary Capacity 360° Arc	Pick & Carry Capacity Up to 2.5 mph Boom Centered Over Front
4	17,900	14,700	15,000
6	17,000	10,600	13,300
6	15,000	9,290	12,450
7	14,900	7,380	11,100
8	12,700	5,920	10,000
10	7,920	4,170	7,920
12	5,680	3,150	5,680
14	4,450	2,500	4,450
16	3,520	2,040	3,520
18	2,920	1,700	2,920
20	2,480	1,430	2,460
22	2,130	1,220	2,130

A6-829-007981B

THIS CHART IS ONLY A GUIDE AND SHOULD NOT BE USED TO OPERATE THE CRANE. The individual crane's load chart, operating instructions and other instructional plates must be read and understood prior to operating the crane.

Superstructure specifications

Boom

10.5 ft. - 24 ft. (3.2 m - 7.3 m) three-section full power boom.

Maximum tip height: 29 ft. (8.8 m).

Fixed Swingaway Extension

10 ft. (3.05 m) swingaway extension. Offsettable at 0° or 45°. Stows alongside base boom section.

Maximum tip height: 39 ft. (11.9 m).

***Optional Telescopic**

Swingaway Extension

10 ft. - 15 ft. (3.05 m - 4.5 m) telescoping swingaway extension. Offsettable at 0° or 45°. Stows alongside base boom section.

Maximum tip height: 44 ft. (13.4 m).

Boom Nose

Two lower steel sheaves and one idler sheave mounted on bronze bushings with removable pin-type rope guards.

***Optional Searcher Hook**

Boom nose mounted. 3,000 lbs. (1316 kg) capacity.

Boom Elevation

One double acting hydraulic cylinder with integral holding valve provides elevation from 0° to 70°.

Load Moment

& Anti-Two Block System

Standard load moment and anti-two block system with audio-visual warning and control lever lockout. These systems provide electronic display of boom angle, length, radius, tip height, relative load moment, maximum permissible load and load indication and warning of impending two-block condition.

Cab

Standard frame mounted control station includes all crane function and driving controls, engine monitoring instrumentation and deluxe fabric seat with seat belt. Standard full vision, all steel fabricated enclosed cab with tinted safety glass throughout. Dash panel incorporates gauges for all engine functions. Other features include skylight, sliding left & right side windows, electric windshield washer-wiper, circulating air fan and fire extinguisher.

Swing

Ball bearing swing circle with 360° continuous rotation. Grove planetary glide-swing with automatic type multi-disc brake.

Maximum speed: 1.5 RPM.

Counterweight

2,100 lbs. (952 kg) integral with superstructure.

Hydraulic System

Two main gear pumps with a combined capacity of 54.4 GPM (205.7 LPM), driven by carrier engine through PTO.

Two individual valve banks.

Return line type filter with full flow by-pass protection and service indicator. Three micron rated replaceable cartridge.

30 gallon (114 L) reservoir.

Remote-mounted oil cooler with thermostatically controlled electric motor driven fan.

System pressure test ports with quick release type fittings for each circuit.

HOIST SPECIFICATIONS

Main and Auxiliary Hoist

Planetary reduction with automatic spring applied multi-disc brake and hoist drum cable followers.

Maximum Single Line Pull:	9,580 lbs. (4345 kg)
Maximum Single Line Speed:	145 FPM (44 m/min)
Maximum Permissible Line Pull:	7,400 lbs. (3356 kg)
Rope Diameter:	9/16 in. (14 mm)
Rope Length:	130 ft. (39.6 m)
Maximum Rope Stowage:	181 ft. (55.2 m)

**Denotes optional equipment*

Carrier specifications

Chassis

High strength alloy steel construction with integral outrigger housings and front/rear lifting, towing and tie down lugs.

Carry deck with surface area of 62 sq. ft. (5.8m²)

Outrigger System

Front and rear oblique type telescoping beams at all four corners with integral holding valves. Outrigger pads are an integral part of the beam and have a surface area of 72 sq. in. (464 cm²).

Maximum outrigger pad load 15,000 lbs. (6804 kg).

Outrigger Controls

Controls and crane level indicator located in cab.

Engine

Cummins 4B3.9L diesel, four cylinders, 76 bhp (57 kW) (Gross) @ 2,500 RPM.

Maximum torque: 184 ft. lbs. (250 Nm) @ 1,200 RPM.

*Optional Engine

Continental TM 2.7L, four cylinders, 2.7L gasoline engine, 66 bhp (49 kW) (Gross) @ 2,800 RPM.

Maximum torque: 144 ft. lbs. (195 Nm) @ 1,800 RPM.

Fuel Tank Capacity

30 gallons (114 L)

Transmission

Automatic with 3 speeds forward and 1 reverse with torque converter.

Electrical System

One 12 V - maintenance free battery. 12 V starting.

Drive

4 x 2

Steering

Rear: Full hydraulic power, controlled by steering wheel.

Axes

Front: Drive-type with no spin differential and planetary reduction hubs rigid mounted to chassis.

Rear: Steer-type rigid mounted to frame.

Brakes

Hydraulic drum and shoe type acting on front drive wheels. Mechanical hand lever actuated parking brake.

Tires

10.00 x 15-16 PR tube type, deep mine lug.

Lights

Full lighting package including turn indicators, head, tail, brake and hazard warning lights.

Maximum Speed

17 MPH (27 kph) with automatic transmission.

*29 MPH (46.7 kph) with manual transmission.

Gradeability (Theoretical)

65.6% (Based on 15,461 lbs. [7013 kg] GVW).

Miscellaneous Standard Equipment

Dual rear view mirrors, hookblock tiedown sling, electronic back-up alarm, light package and stowage well.

Optional Equipment

- * Worklights
- * 360° Flashing light
- * Cab spotlight
- * Tachometer
- * Cold start aid (less canister)
- * Engine block heater
- * Maintenance platform
- * Hookblocks
- * Tow winch
- * Tool kit
- * Pintle hook front/rear
- * Carry deck posts
- * LP gas conversion kit (less bottle)
- * Engine low oil pressure/high water temperature A/V warning system
- * Spark arrestor muffler
- * Sound suppression kit
- * Hot water heater and forced air defroster
- * Optional hydraulic brakes acting on all four wheels.
- * Manual Transmission 4 x 4

**Denotes optional equipment*